

Boiler Feed Water Pumps (BFW) Steam Turbine

FAULT TYPE:

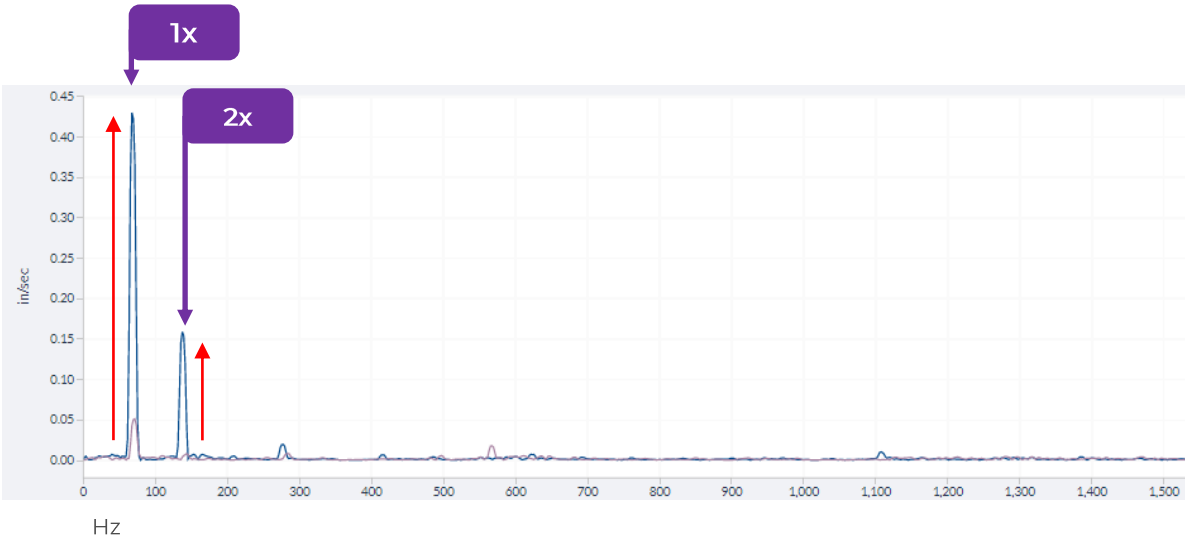
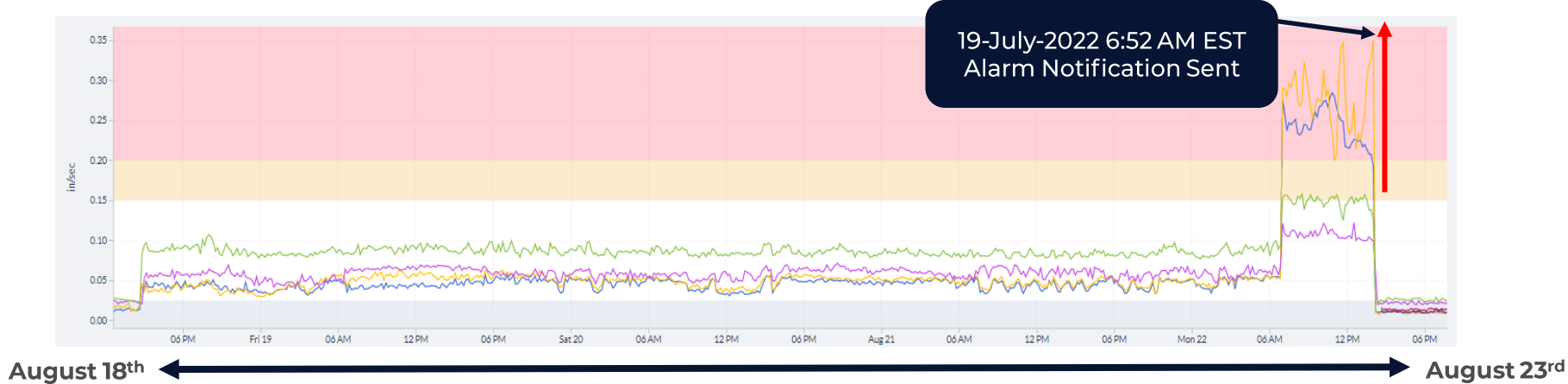
- Imbalance (Damaged Vanes)

INDICATION:

- Alarming step-up in RMS Velocity vibration at multiple points across the asset.
- Elevated running speed frequency shown in the Velocity Spectrum, paired with an elevated 2x running speed frequency harmonic

ACTION TAKEN:

- Equipment taken offline and switched to redundant system while Turbine sent off for rebuild
- Equipment damage isolated to Turbine, Pump still in good condition



“Healthy” Vibe Pattern  High Vibe Pattern 

