

Boiler Draft System (BDS) Primary Air Fan (PA Fan) > Pillow Block Bearing

FAULT TYPE:

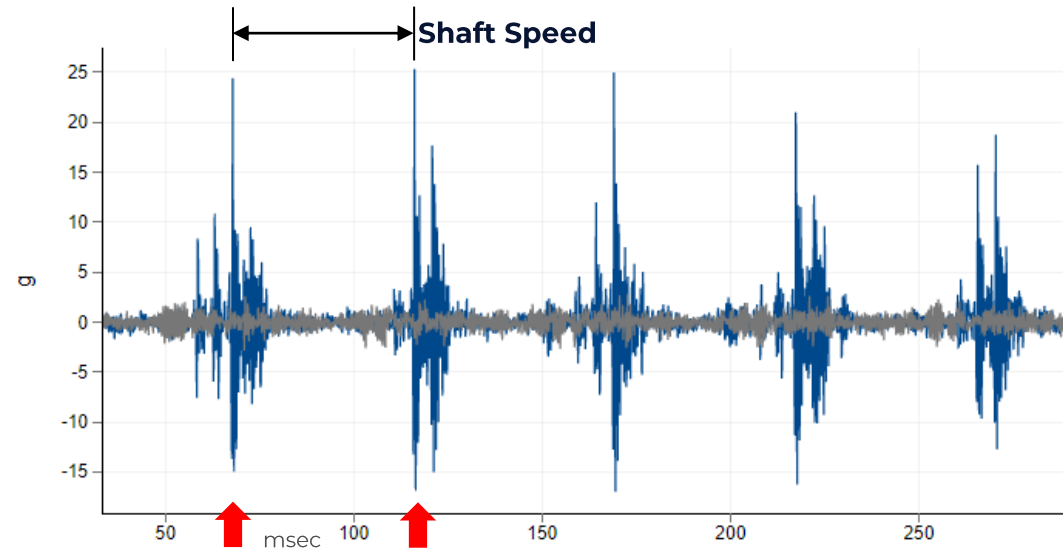
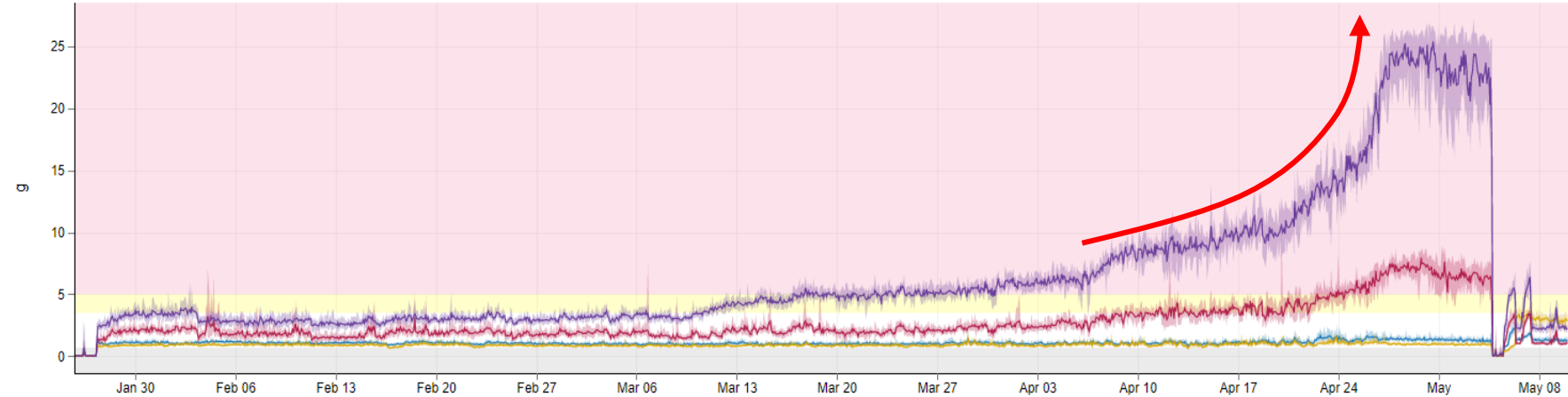
- Stage 4 Bearing Fault (<1% L10 Life Remaining)

INDICATION:

- Aggressive uptrend in the Peak Acceleration indication over a 2-week time frame
- Impacting events in the Time-Waveform at the shaft turning speed with specific bearing fault frequencies present.

ACTION TAKEN:

- Bearing replaced, major downtime avoided.



Late Stage Bearing Wear Vibration Pattern



New, Healthy Bearing Pattern

